

# Launceston Historical Society Inc.

## Newsletter No 174

August 2020

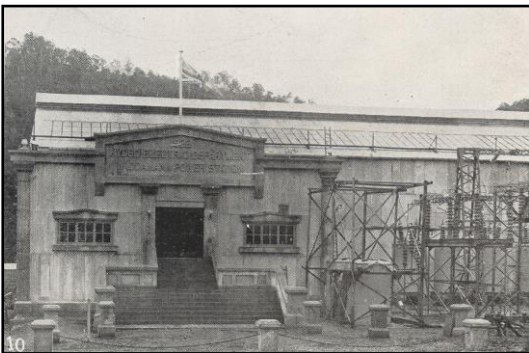
ISSN 1036-7950

PO BOX 1296 LAUNCESTON TAS 7250

*Bringing together people with an interest in history*

### Waddamana – Our Spring Excursion is still going ahead

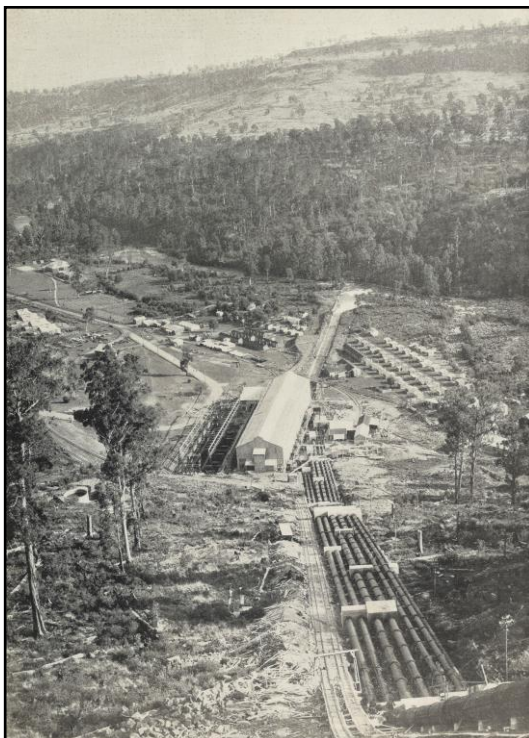
Unless circumstances change, our day trip to the Waddamana Power Station Museum is still happening. See page 3 for more details. Here is some history of the first HEC power station in Tasmania.



#### Examiner, Saturday 13 January 1923, page 13

The story of the Tasmanian Government Hydro-Electric scheme at the Great Lake is a tribute to the pioneering foresight and engineering achievements of those concerned in its initiation and development....

Already works of considerable importance to the state have been established in Launceston. Messrs. Baldwins and Patons works are in course of erection in the Northern city, and also Messrs. Kelsall and Kemp's. In addition to employing a considerable number of hands, these works will bring prominently before the world the advantages which Launceston offers to manufacturers....

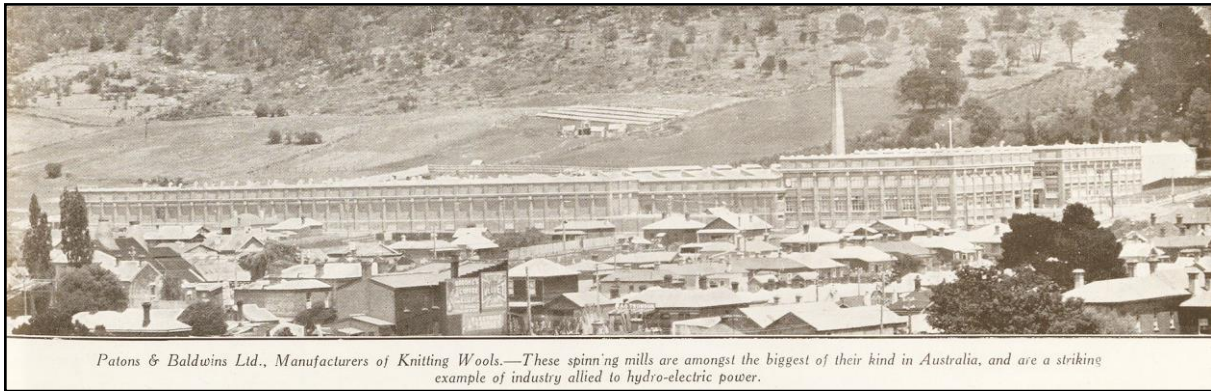


A visit is to be paid to the Great Lake next week by the Governor-General (Lord Forster)... On Wednesday morning the party will leave Deloraine by motor car for the north end of the Great Lake, accompanied by the General Manager of the department. [At] Miena his Excellency will open the new multiple arch dam at the Great Lake. The formal ceremony will consist of the opening of the sluice gates, allowing the water to run from the lake to the power works at Waddamana, by way of the River Shannon and the canal.

His Excellency will leave by motor car for the intake, and in company with the Premier and the General Manager of the department will proceed on horseback on an inspection of the canal, penstock chamber, and pipe lines, Waddamana being reached in the evening.

On Thursday morning his Excellency will inspect the works, and at 12.30 will start up No. 9 turbine, which completes the Waddamana installation and switch on power to No. 4 transmission line, thus making available an additional 15,000 horse-power to the Electrolytic Zinc Company at Risdon.

**Weekly Courier pictures of Waddamana:** The new entrance to the Government's Hydro-Electric Power Station, 5 July 1923; and view of the township looking down from the pipeline, 31 May 1923.



Patons & Baldwins Woollen Mills, Launceston. *Weekly Courier*, 6 November 1929, page 12.

## LHS activities for 2020

Launceston Historical Society meetings are usually held at the meeting room, Queen Victoria Museum, Inveresk, on the third Sunday of the month at 2pm, unless otherwise notified.

Due to the coronavirus **we have decided to postpone all the remaining 2020 meetings** until the same month next year. To be COVID-safe, the Museum meeting room can accommodate 40 people only, and we cannot serve our sumptuous afternoon teas. But we can hold our Spring excursion for members only.

- 16 August**                    **Robert Smith**, *William Henry Clayton: an amateur's perspective of the legacy of the architect in Tasmania and New Zealand*
- 20 September**            **Dr Nic Haygarth**, *Who killed the Tigers? A preliminary analysis of applicants for the Tasmanian thylacine bounty 1888–1909*
- 18 October**                **Nigel Burch**, *Sir Richard Dry, our greatest hero (Seniors Week)*
- 2 November**               **Excursion to Waddamana Power Station Museum** (Monday long weekend)
- 15 November**            **Duncan Grant**, *Churches in Northern Tasmania part 2*

Earlier talks are being uploaded on our website, so catch up on ones you missed or listen to them again: <http://launcestonhistory.org.au/lhs-lecture-series/>

Because we have not been able to offer our usual program this year memberships will be rolled over until 2021. Fingers crossed we can continue as usual in February.

## Other Events of Interest

**Oral History Seminar:** Saturday, 5 September 2020, 1 – 3pm, Queen Victoria Museum, Inveresk.

Debra Cardogan-Cowper will present *'Dial a Local': sharing our locals' stories* about the Ross Wool Centre's oral histories presented to visitors through a vintage red telephone box. Terrie Pollard's *When we were young* recounts her project interviewing elderly Kentish residents about their memories of living around Sheffield in the first 20 years of their lives. This COVID-safe seminar costs \$10. For further details visit [www.oralhistorytas.org.au](http://www.oralhistorytas.org.au) or ring Jill Cassidy on 0418 178 098.

**George Town & District Historical Society:** Monday, 21 September 2020, 7.30pm, The Grove.

John Watts, *The Crew & Missions of Lancaster F385 – 75<sup>th</sup> Anniversary*.

## Members' Column

**New members:** The President and Executive welcome to our Society the following new members: Wayne Binns, Phil Page and Rod Oliver.

**Membership Form + charge for visitors to attend meetings:** A membership form is available on our website: [Membership Form.pdf](#). Sunday meetings are free for LHS members, and \$4 for visitors. As the remainder of the Sunday Lectures have been postponed, membership for 2020 will be rolled over to 2021.

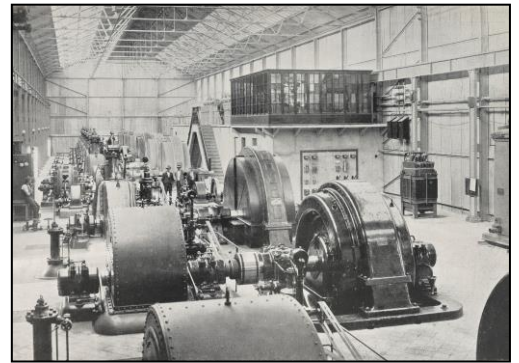
**LHS Archaeology Group:** Contact John Dent: [john.dent@pda.com.au](mailto:john.dent@pda.com.au)

# Waddamana Excursion

Monday 2 November 2020

## The Launceston Historical Society's Spring Excursion for Members

- 9.00 am Veterans and Community Bus departs from the Eardley Street carpark behind the RSL Park in the bottom carpark.
- 9.50 am Arrive at Poatina for a 20-minute comfort stop.
- 11.00 am Meet **Chris Tassell** for a guided tour of the Waddamana Hydro Power Station heritage site. There will be free time to explore the exhibitions and walking trail. Opened in 1916, this was the first hydro-electric power plant operated by the Tasmanian Hydro-Electric Department.  
<https://www.hydro.com.au/things-to-do/waddamana-heritage-site>  
Lunch at Waddamana in the picnic area. Bring your own cut lunch and coffee / hot water as there are no eating options available at the Museum. Wear warm clothing and a mask.
- 1.00 pm Depart Waddamana. We may visit The Steppes Homestead before arriving at Bothwell for a short break.
- 2.30 pm Depart Bothwell.
- 3.30 pm Arrive at Ross for a quick snack.
- 4.00pm Depart Ross.
- 5.00 pm Proposed arrival back in Launceston.



Turbines at Waddamana. WC 17 May 1923.

Please post or email the details below @ **\$25.00 per person**.

Post a cheque to the Treasurer, Launceston Historical Society, PO Box 1296, Launceston, TAS 7250, **or** pay by direct debit BSB 067 003 A/C 2804 8638, and email Leonie Prevost: [leonie.prevost@bigpond.com](mailto:leonie.prevost@bigpond.com) or Marion Sargent: [marionsargent@bigpond.com](mailto:marionsargent@bigpond.com), phone 0438 432 848.

✂-----

<b>Waddamana Excursion, Monday 2 November 2020</b>	Return to:
Name.....	LHS Inc.
Address.....	PO Box 1296
Mobile.....	LAUNCESTON TAS 7250
Email.....	<b>\$25.00 per person</b>
BYO food and drinks for a picnic lunch. Wear warm clothing. A mask is recommended for the bus.	

# Dick and Joan Green Family Award for Tasmanian History

*The National Picture: The Art of Tasmania's Black War* (The National Gallery of Australia) is the winner of the prestigious \$25,000 Tasmanian history prize. Authors Tim Bonyhady and Greg Lehman interrogate the visual record of colonial artists created during a brutal period in Tasmania's history, the Black War. The book examines the depiction in art of the conflict between Tasmanian Aboriginal people and colonists, and two figures in Australian history: artist Benjamin Duterrau and the controversial 'Conciliator' George Augustus Robinson.

## Our History

These stories on Launceston's history have been contributed by our members. You are welcome to send articles of 470 words, with at least three pictures, to the president [marionsargent@bigpond.com](mailto:marionsargent@bigpond.com). Read the stories in *The Sunday Examiner* or on [Facebook](#). Note the changed requirements.

We are preparing a book with 100 of these stories – more information to come.

No	Date	Page	Author	Title	Topic
132	7 Jun 2020	17	Catherine Pearce	Launceston's insidious foe: typhoid	Typhoid in Launceston
133	14 Jun 2020	40	Nigel Burch	Hagley: that little farm school that could	Hagley Farm School
134	21 Jun 2020	36	Julian Burgess	Art deco architecture at its finest	Holyman House
135	28 Jun 2020	37	Nigel Burch	Our Launceston man in London	Our man in London: Tasmanian Agent-Generals
136	5 Jul 2020	19	Kelli Schultz	Residents readily paid a pretty penny for literary pursuits	Subscription libraries
137	12 Jul 2020	17	Marion Sargent	Echoes of the future – dealing with another deadly outbreak	Smallpox in Launceston 1903
138	19 Jul 2020	21	Inner Wheel Club	Club's foundation was friendship and community service	History of the Inner Wheel Club of Launceston
139	26 Jul 2020	17	Nigel Burch	Pioneer set standard at Beaconsfield	Joseph Davies & the Beaconsfield Mine
140	2 Aug 2020	17	Nigel Burch	Road to enlightenment led to Rowella	Frank Lee Woodward
141	9 Aug 2020		Nigel Burch		Horton College, Ross
142	16 Aug 2020		Nigel Burch		Mary Fox & MLC

### Launceston Historical Society

President and Newsletter Editor	Marion Sargent	0438 432 848 or 6331 4890
Vice-President	Kelli Schultz	0408 080 967
Correspondence Secretary	Prue McCausland	6327 2540
Treasurer	Leonie Prevost	0418 575 910
Publicity Officer	Karin Lê	0407 340 179 or 6334 0158

Postal address: PO Box 1296 LAUNCESTON TAS 7250

Email: [launcestonhistory@gmail.com](mailto:launcestonhistory@gmail.com) Website: [www.launcestonhistory.org.au](http://www.launcestonhistory.org.au)

Facebook: <https://www.facebook.com/launcestonhistory>

## Deadline

Items for the next *Newsletter* should be sent to the editor by **1 Oct 2020** at [marionsargent@bigpond.com](mailto:marionsargent@bigpond.com) or PO Box 1296 LAUNCESTON TAS 7250.

Kindly printed by the office of Peter Gutwein MP